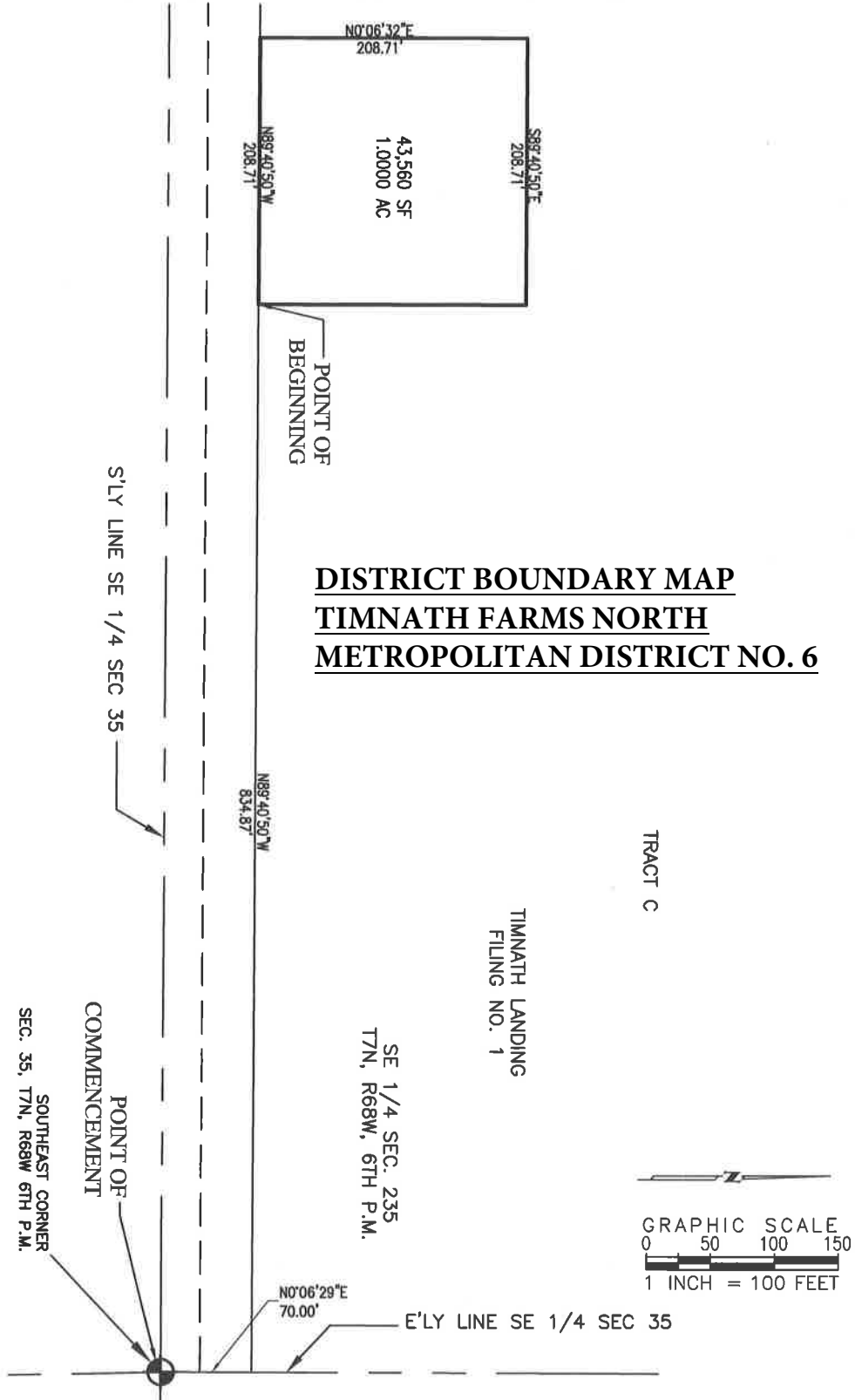




EXHIBIT - DISTRICT NO. 6



POUDRE SCHOOL DISTRICT R-1
REC. NO. 99073702

TIMNATH FARMS NORTH METROPOLITAN DISTRICT
439.023 AC.

(O'NEILL PARCEL
78.403 AC.)

(6.532 AC. - OMNITRAX)

TIMNATH FARMS METROPOLITAN
DISTRICT NO. 1
85.030 AC.

(DIRECTOR'S
PARCEL
1.000 AC.)

TIMNATH FARMS
DISTRICT NO. 2
1,000 AC.

TIMNATH FARMS
DISTRICT NO. 5
1,000 AC.

TIMNATH FARMS
DISTRICT NO. 5
1,000 AC.

TIMNATH FARMS
DISTRICT NO. 4
1,000 AC.

TIMNATH FARMS
DISTRICT NO. 3
1,000 AC.

TIMNATH FARMS
DISTRICT NO. 2
1,000 AC.

- 439.023 AC. RES. DIST.
- +85.030 AC. COM. DIST.
- + 1,000 AC. DIST. 2
- + 1,000 AC. DIST. 3
- + 1,000 AC. DIST. 4
- + 1,000 AC. DIST. 5
- + 1,000 AC. DIST. 6
- 529.053 AC.
- 2.208 AC. PRIVATE RESIDENCE
- 6.532 AC. OMNITRAX
- 520.313 AC.
- 7.5 AC. McMORRIS ESTATE
- 12.0 AC. PROPOSED CHURCH SITE
- 25.0 AC. TO BE RETAINED BY McMORRIS FOR CUSTOM LOTS
- 475.813 AC. NET ACRES SUBJECT TO PURCHASE

(2.208 AC.)

(7.5 AC.)



EMK CONSULTANTS, INC.
LAND DEVELOPMENT
ENGINEERING SURVEYING
7608 SOUTH ALTON WAY, BLDG. F
DENVER, COLORADO 80231
(303)754-1130
www.emk.com