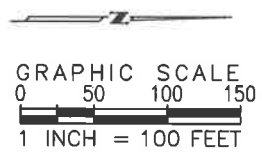
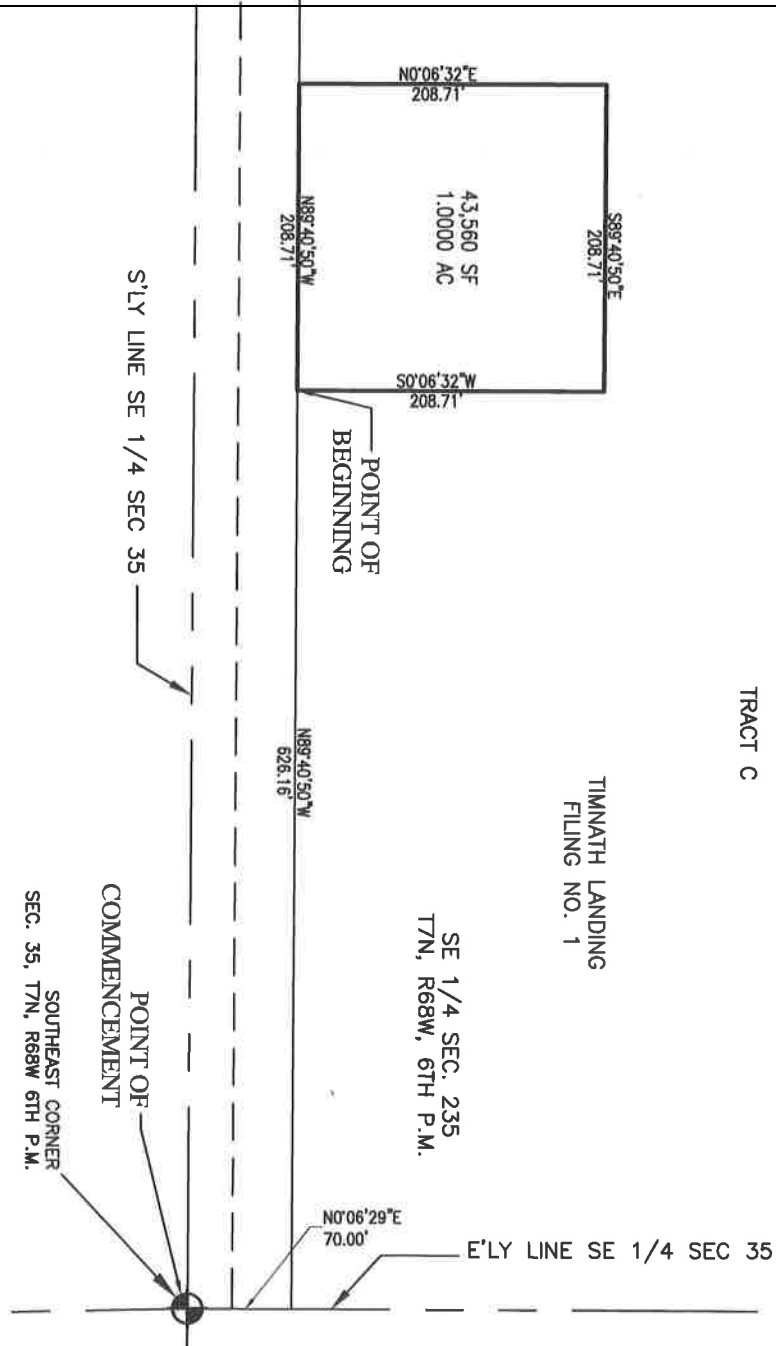




EXHIBIT – DISTRICT NO. 5  
DISTRICT BOUNDARY MAP  
TIMNATH FARMS NORTH METROPOLITAN DISTRICT NO. 5



POUDRE SCHOOL DISTRICT R-1  
REC. NO. 99073702

TIMNATH FARMS NORTH METROPOLITAN DISTRICT  
439.023 AC.

(O'NEILL PARCEL  
78.403 AC.)

(6.532 AC. - OMNITRAX)

TIMNATH FARMS METROPOLITAN  
DISTRICT NO. 1  
85.030 AC.

(DIRECTOR'S  
PARCEL  
1.000 AC.)

TIMNATH FARMS  
DISTRICT NO. 2  
1.000 AC.

TIMNATH FARMS  
DISTRICT NO. 5  
1.000 AC.

TIMNATH FARMS  
DISTRICT NO. 5  
1.000 AC.

TIMNATH FARMS  
DISTRICT NO. 4  
1.000 AC.

TIMNATH FARMS  
DISTRICT NO. 3  
1.000 AC.

- 439.023 AC. RES. DIST.
- +85.030 AC. COM. DIST.
- + 1,000 AC. DIST. 2
- + 1,000 AC. DIST. 3
- + 1,000 AC. DIST. 4
- + 1,000 AC. DIST. 5
- + 1,000 AC. DIST. 6
- 529.053 AC.
- 2.208 AC. PRIVATE RESIDENCE
- 6.532 AC. OMNITRAX
- 520.313 AC.
- 7.5 AC. McMORRIS ESTATE
- 12.0 AC. PROPOSED CHURCH SITE
- 25.0 AC. TO BE RETAINED BY McMORRIS FOR CUSTOM LOTS
- 475.813 AC. NET ACRES SUBJECT TO PURCHASE



EMK CONSULTANTS, INC.  
LAND DEVELOPMENT  
ENGINEERING/SURVEYING  
7608 SOUTH ALTON WAY, BLDG. F  
DENVER, COLORADO 80231  
(303)754-1130  
www.emk.com